



The BUZZ @ Park View

SPRING 2020 | www.pvfcu.org

INSIDE THIS ISSUE

**2020 Board of Directors
Candidates Announced**

**Financial Advisors'
Website Gets A Fresh
New Look**

Business Services

Mortgage: Great Service

**Round Up: An Easy Way
To Save**

50 Acts For 50 Years

#TheParkViewWay

At Park View, we are small enough to care, but large enough to deliver products and services that help improve the quality of our members' lives. We put our members at the center of everything we do and our mission is to help them achieve their financial goals and dreams. We strive to always act in their best interest. In short, we don't just look out for our members' money, we look out for our members and the communities they live in. This is what we call #theparkviewway.

Members can expect us to:



Show **integrity** in every interaction.



Provide an **inviting & professional** experience.



Listen & respond appropriately with your best interests in mind.



Positively impact our members & our community.



Make it **easy** for you to do business with us.

MAKING A POSITIVE IMPACT

At the end of 2019, Park View's Sergey Primbetov was invited to join World Council of Credit Unions (WOCCU) representatives traveling to Ukraine. The WOCCU team met with various government and credit union representatives in Ukraine under the USAID efforts there to help grow the credit union sector and provide access to more affordable credit for small farmers.



Sergey Primbetov [left] alongside Stephanie Grell Azar and Andy Price

Park View
FEDERAL CREDIT UNION

#theparkviewway

BOARD NOMINEES

The Nominations Committee recommends the following candidates to fill the three open positions on the Board of Directors. The committee evaluates the skills needed to create a strong board and seeks to fill vacancies accordingly. Board members are volunteers and appointed to serve for a three-year term with a maximum of 12 years.

SHERMAN KNICELY

Sherman is the owner of County Line Construction and County Line Materials, and co-owner of Rolling "K" Farm. He is a board member of Hickory Hollow Christian School. Sherman is a member of Mt. Pleasant Mennonite Church. He has been a Park View Board Member since 2014 and currently serves on the Personnel committee and the Dayton Advisory Council.

KATE BERGEY

Kate cares deeply about education and currently works as a Career and Academic Advisor at James Madison University. She holds a M.Ed. in Counseling Psychology. She is a member of Harrisonburg Mennonite Church. She has been a Park View Board Member since 2017 and currently serves on the Personnel Committee.

ED YODER

Ed is a CPA and Partner at PBMAres, LLP. He serves as Treasurer for Rockingham County Rotary Club, Valley Baseball League, Harrisonburg and Rockingham Crime Solvers, and Massanutten Regional Library. Ed is a member of Park View Mennonite Church. He has been a Park View Board Member since 2017 and currently serves as the Vice Chair and Supervisory Chair.

Members in good standing may present themselves as a candidate for an open position by presenting a petition signed by 112 members [1% of membership] to the Nomination's Committee. Petition procedures are available by calling Cindy Smoker at 540.434.6444 ext. 146. The deadline for filing your signed petition is April 25, 2020.



A FRESH NEW LOOK

Park View Financial Advisors are excited to announce that their website has a new and refreshed look!

This update was designed to make your experience of the site better with a stronger sense of **who the advisors are**, **what they do**, and **why they do it**.

Additionally, easy-to-use navigation allows you to quickly find the information you are looking for. The site also houses a large library of articles covering financial topics for every stage of life.

 www.parkviewadvisors.org

Resources At Your Fingertips:



Valuable financial articles



Financial calculators for all your money goals



Short videos focused on a variety of financial topics



Tax library to help manage your taxes

Whether you are looking to meet with a financial advisor for the first time or in the market for a new advisor, we invite you to visit the refreshed site, as well as connect with Park View Financial Advisors, **Sherwyn Smeltzer** and **Debra Mowery** at 540.564.6111 or parkviewadvisors@pesmail.com.

Advisory services offered through Investment Advisors, a division of ProEquities, Inc., a Registered Investment Advisor. Securities offered through ProEquities, Inc., a Registered Broker/Dealer and member of FINRA and SIPC. Park View Federal Credit Union and Park View Advisors are independent from ProEquities, Inc. Securities and insurance products offered are not financial institution deposits, have no financial institution guarantee, are not FDIC/NCUA insured and may lose value.

BUSINESS SERVICES

#theparkviewway

Guided by honesty and integrity, Park View's Business Advisors provide **value**, **creative solutions** and **personalized service** to every business relationship.



Checking Accounts

- Small businesses
- Large commercial accounts
- Non-profit organizations
- Churches



Lending Solutions

- Lines of credit
- Credit cards
- Trucks, vehicles, & equipment
- Construction
- Rental investments
- Commercial real estate

Our Business Advisors are here to guide you through your options and find the best fit for you and your business.

Learn more at www.pvfcu.org/business-services.



Great loans. Great rates. Great service.

- ✓ Competitive low rates
- ✓ Fast in-house processing
- ✓ Friendly & knowledgeable mortgage advisors
- ✓ Many mortgage options available
- ✓ Free quotes, consultations and preapprovals
- ✓ Members Title, a convenient in-house closing option

540.437.7412 | mortgage@pvfcu.org
NMLS# 653464



SAVE MONEY WITHOUT CHANGING YOUR LIFESTYLE

Park View's Round Up feature automatically rounds up your everyday debit card purchases to the nearest dollar and transfers the spare change into your Park View Rewards Account, earning **4.00% APY**¹.

The more you use your Park View debit card, the more you build your savings!



1
SWIPE
A DAY



50¢
AVG
ROUND UP



365
DAYS A
YEAR

=



\$182.50
SAVINGS
A YEAR

Get Started Today!

Visit us online at www.pvfcu.org/round-up, call, or stop by a branch.

¹APY = Annual Percentage Yield. APY is valid as of 3/1/2020. All rates quoted are subject to change after the account is opened. Balance in Rewards Account earns dividends, paid quarterly.



The BUZZ @ Park View

Park View Federal Credit Union
1675 Virginia Avenue
Harrisonburg, VA 22802

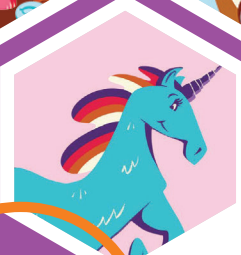
540.434.6444 | www.pvfcu.org
Federally Insured by NCUA



PRSRT STD
U.S. Postage
PAID
Park View



April
is National Credit
Union Youth Month!
*Be on the lookout
for exciting offers &
giveaways*



June 4
Save the date for Park
View's Annual
Neighborhood
Connection



50 Acts for 50 Years Giving back to our community

Park View Federal Credit Union celebrated its 50th Anniversary throughout 2019 by conducting "50 Acts of Kindness."

Throughout 2019, Park View donated to local schools, non-profit organizations, and local community events. These acts of giving back not only showcased the credit union difference, but also enhanced #theparkviewway brand; all while giving back to the communities Park View has had the privilege to serve for 50 years.

For a complete listing of all "50 Acts," visit www.pvfcu.org/50-acts-of-kindness.

555

Employees volunteered over 555 hours of their time to various organizations



Collected and donated food and supplies for Rockingham-Harrisonburg SPCA

\$1,000

\$1,000 in scholarship funds were provided to local high school seniors



New and gently worn coats were collected for kids and adults

\$17,000

Donated \$17,000 to local schools in the form of in-kind donations and sponsorships.



Food and other items were collected for First Step: A Response to Domestic Violence

3

Park View covered the entry fee for fans at 3 local baseball games.



Sponsored local high school Christmas concerts